

PANEL REF:	CIRCUIT NUMBER			
	DIMMABLE	NON-DIMMED	DMX	DATA
FP05	59, 60, 61, 62, 63, & 64 (Palnet 59, 60, 61 & 62)	ND147	DMX 5	NET 5
FP06	63, 64, 65 & 66 (Palnet 63, 64, 65 & 66)	ND148	DMX 6	NET 6
FP07	67, 68, 69 & 70 (Palnet 67, 68, 69 & 70)	ND149	DMX 7	NET 7
FP08	71, 72, 73 & 74 (Palnet 71, 72, 73 & 74)	ND168	DMX 8	NET 8
FP09	75, 76, 77, 78, 79 & 80 (Palnet 75, 76, 77, 78, 79, 80, 81 & 82)	ND151 & 151	DMX 9	NET 9
FP10	83, 84, 85, 86, 87 & 88 (Palnet 83, 84, 85, 86, 87, 88, 89 & 90)	ND152 & 152	DMX 10	NET 10

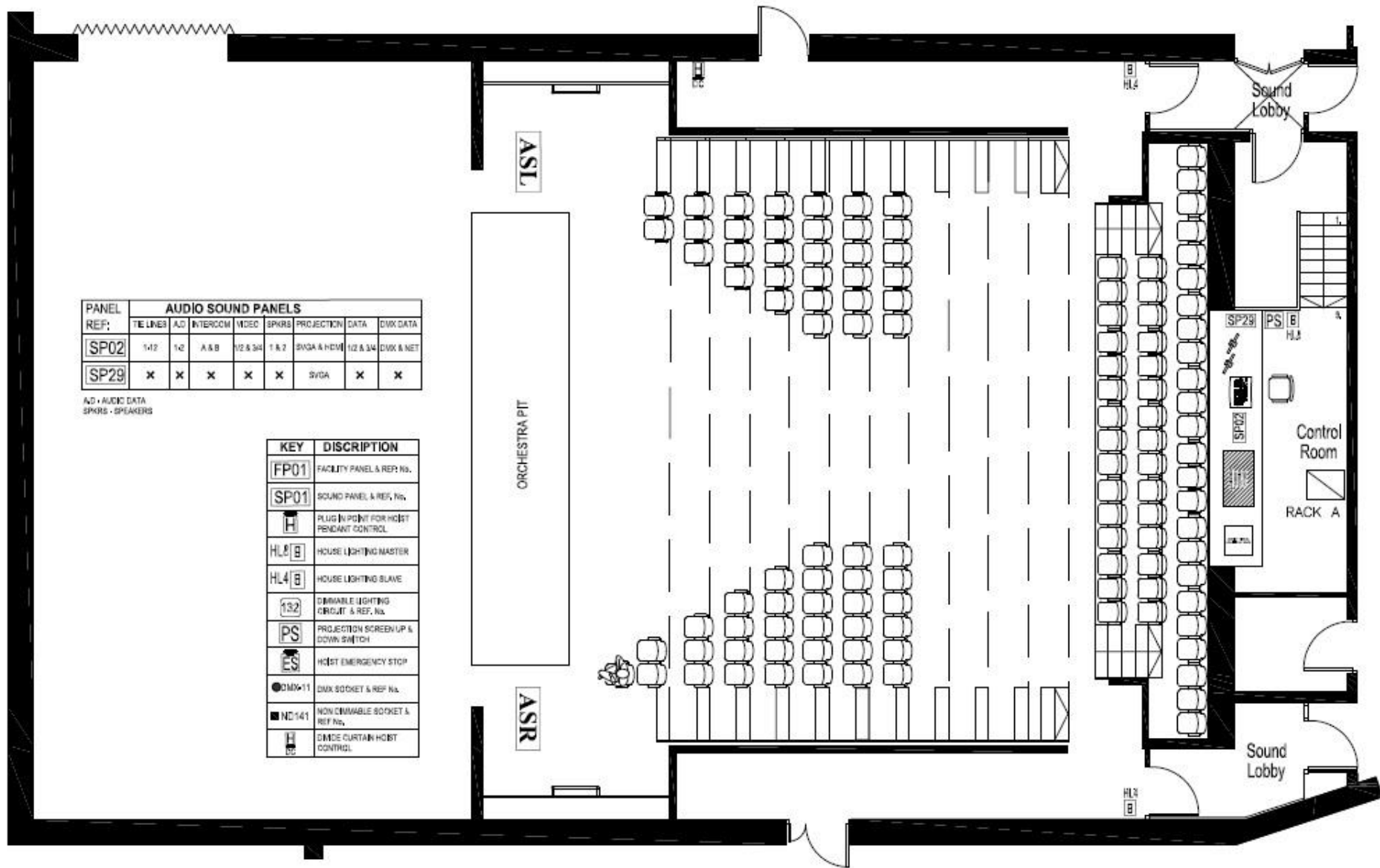
PANEL REF:	AUDIO SOUND PANELS						
	TELINES	AD	INTERCOM	VIDEO	SPKRS	PROJECTION	DATA
SP04	1-12	1/2	A & B	1-4	1-4	SVGA & HDMI	✗
SP05	1-12	1/2	A & B	1-4	1-4	✗	✗
SP06	1-12	✗	✗	1 & 2	1 & 2	✗	A & B
SP07	1-12	✗	✗	1 & 2	1 & 2	✗	A & B
SP09	1-4	✗	A & B	1 & 2	1-4	SVGA & HDMI	A & B
SP10	1-4	✗	A & B	1 & 2	1/2-3/4	✗	A & B

AD - AUDIO DATA
SPKRS - SPEAKERS

KEY	DISCRPTION
FP01	FACILITY PANEL & REF. No.
SP01	SOUND PANEL & REF. No.
H	PLUS IN POINT FOR HOIST PENDANT CONTROL
HL6 E	HOUSE LIGHTING MASTER
HL4 E	HOUSE LIGHTING SLAVE
132	DIMMABLE LIGHTING CIRCUIT & REF. No.
PS	PROJECTION SCREEN UP & DOWN SWITCH
ES	HOIST EMERGENCY STOP
DMX-11	DMX SOCKET & REF. No.
ND141	NON DIMMABLE SOCKET & REF. No.

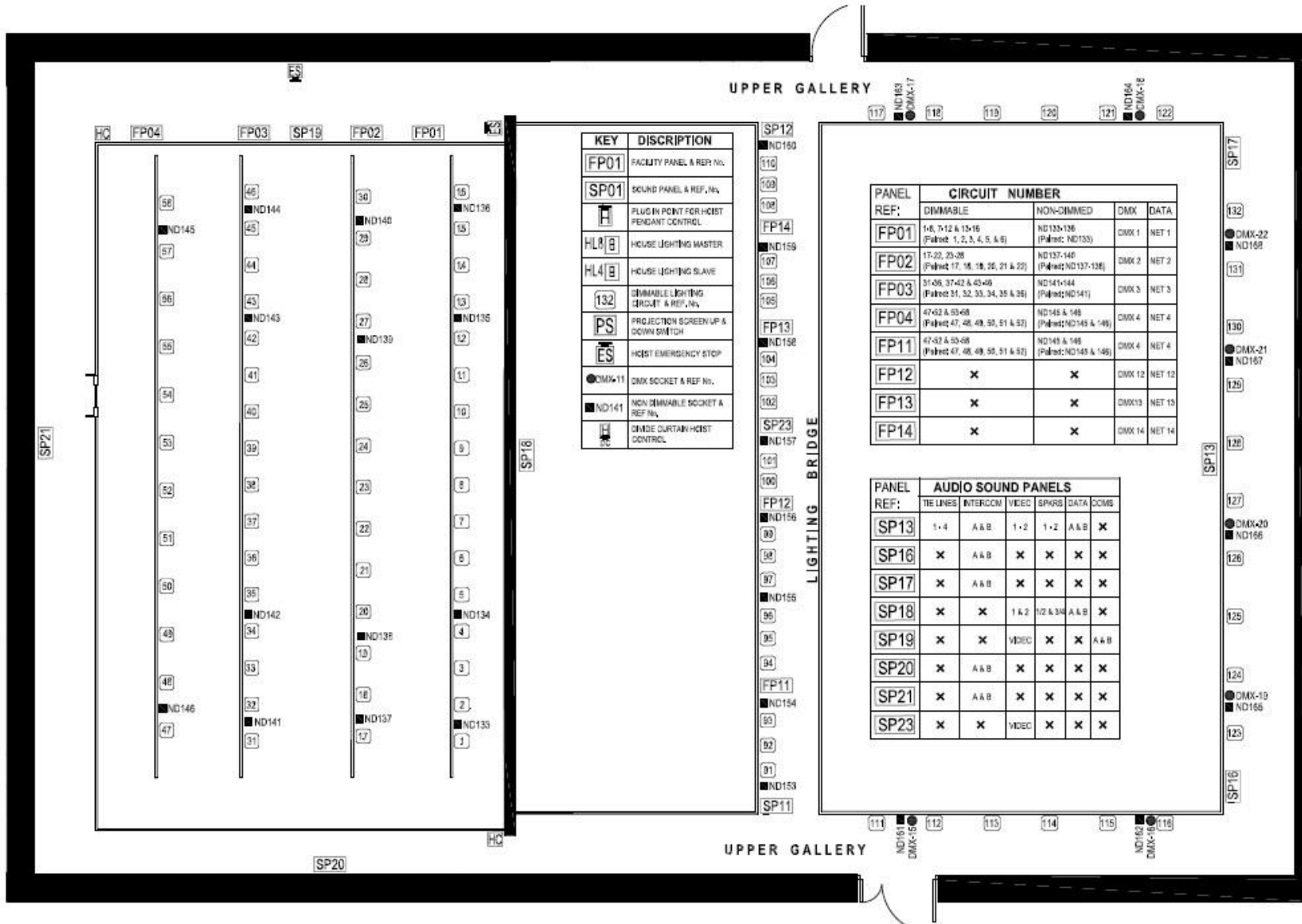
AUDITORIUM & STAGE AREA GROUND FLOOR:

LIGHTING CURCUIT NUMBERING & PANEL REFERENCE.



AUDITORIUM MID FLOOR:

LIGHTING CURCUIT NUMBERING & PANEL REFERENCE.



AUDITORIUM LIGHTING BRIDGE & UPPER LEVEL:
 LIGHTING CURCUIT NUMBERING & PANEL REFERENCE LAYOUT
 Garage Theatre Technical Specifications (Main Auditorium)

Lighting Control Desk:

Strand Palette VL16 1000 Channel Control Desk & PSU

Strand Palette Keyboard

Remote Focus Unit

Lamps / Luminaires

4No. ETC Source 4, 19 degree and colour frame (HPL 750/230 Lamp)

4No. ETC Source 4, 26 degree and colour frame (HPL 750/230 Lamp)

6No. ETC Source 4 Zoom CE, 15-30 degree and colour frame (HPL 750/230 Lamp)

4No. ETC Source 4 Zoom CE, 25-50 degree and colour frame (HPL 750/230 Lamp)

8No. Thomas Par 64 Lantern, 4th Gel Foot E Spec, c/w Colour Frame, Parsafe 2 (CP60 Par64 Lamp)

8No. Thomas Par 64 Lantern, 4th Gel Foot E Spec, c/w Colour Frame, Parsafe 2 (CP61 Par64 Lamp)

8No. Thomas Par 64 Lantern, 4th Gel Foot E Spec, c/w Colour Frame, Parsafe 2 (CP62 Par64 Lamp)

8No. Thomas Par 64 Lantern, 4th Gel Foot E Spec, c/w Colour Frame, Parsafe 2 (CP95 Par64 Lamp)

6No. Lui Cyc 4 Way Batten (K4 Lamp 230V 1000W R7 Base)

18No. Rama 15 Fresnel with GX 9.5 Base and std Yoke (T29 Theatre Lamp 230V 1200W GX9.5 Base)

4No. Arena Theatre Fresnel 2Kw/2.5Kw with Posi-slide Focus action (CP91 Theatre Lamp 230V 2500W G22 Base)

1 No. LDR Canto 1200MSD/MSR Mk2 Followspot

All include Hook Clamps, Lamps, Safety Bonds, leads and 16A Blue Plugs

Sound Re enforcement System

1 No. Yamaha M7CL/32 Control Room Mixing Console

1 No. Nexo NXamp 4x1c Powered Digital TD controller

1 No. Yamaha SPX200 Effects Unit

1 No. Alesis 3632 Dual Compressor

2 No. Behringer FBX3102 Graphic Equalizer

1 No. Camco Q4 4 channel 840w power amplifier

2 No. Turbosound TWM112 12" Stage Monitors

2 No. Turbosound NuQ15 15" 800w full range cabinet speakers on stands

Nexo GEO S12 comprising of:

3 No. S1210 Cabinets

2 No. S1230 Cabinets

Playback Equipment

2 No. Numark Dual CND77 USB

Intercom System

Granite Sound Intercom System in place.

6 No. Granite Sound Single Channel Belt Packs, with Muff Headset & 3m 3pin XLR cables

Comms points in Control Room, USL & R, DSL & R, & Green Room

Show Relay System

1 No. Samsung CCTV Camera c/w Bracket and Power Supply

1 No. Audio Technica AT8033 Show Relay Microphone

6 No. Haier TV Screens

(Screens located in Dressing Rooms, Quick Dress, Green Room, Admin Office & Control Room)